

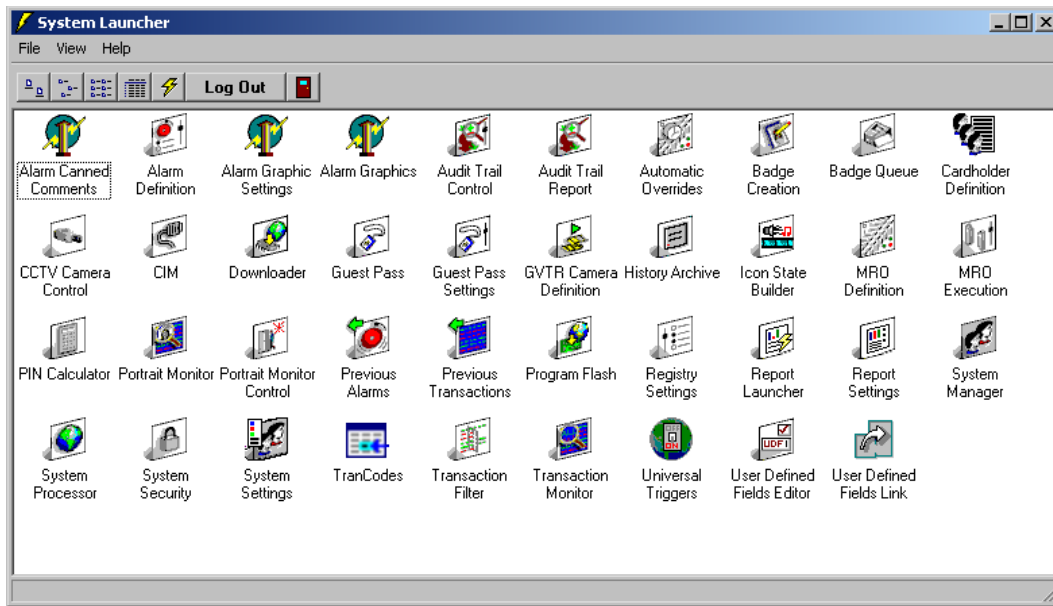
Geoffrey

Access Control Software Version 5.1



FEATURES

- Areas – Provides unlimited, logically grouped access points enabling easy management of cardholder access
- Area Sets – Allows areas to be grouped accommodating access to many areas by one entry
- Audio accompaniment of alarms and instructions to account for various accents for languages
- Cardholder Blocking – Cardholder access can be suspended for all areas or individual areas via one mouse click
- Cardholder Categories – Organizes cardholders into groups to secure views by categories and allows mass changes to multiple cardholders simultaneously
- Cardholder Duplication - Enter multiple cardholders with same area access and cardholder categories with one button
- Cardholder Wizard - Prompts user for all necessary cardholder data when adding a new cardholder
- E-mail Critical Alarms - Critical alarms are pre-programmed to be sent to specified email addresses
- Generic and Advanced Search Wizards - Enables the user to narrow their search depending on criteria
- Graphical Alarm Package easily customized to fit customer needs; Graphics allow for easy response to alarms
- Hardware Map – Graphic view of hardware layout
- Integrated Badging – Standard with all platforms
- Real-Time Card Changes system-wide or by area easily activates, expires or extends cardholder access
- Time Synchronization - Synchronization between CIM and Controller; keeps all boards within 2 seconds of server time.
- The power and performance of MS SQL Server
- ODBC Compliant Database
- Drag and Drop Enabled
- Auto Backups Available with SQL Agent Software
- Conveniently download transactions from and upload instructions to controller
- Program flash allows for easy manual download and update controller firmware
- Integrated Elevator Control
- Security Controlled Database Privileges
- Operates in Microsoft NT 4.0 and Windows 2000 environments



Graphical Alarm Package - use customer floor plan to design easy to use graphics for quick identification of alarm location and fast response to alarm



Alarm Definition - configure alarm points, system response, and required operator response to alarms



Alarm Monitor & View Previous Alarms - view those alarms defined in the system as needing your attention and response



Audit Trail Control & Report - monitor any additions, deletions and changes made to the database



Badge Creation - create your own custom badge layouts.



Badge Queue - folders containing badge to be printed individually or in batches.



Cardholder Definition - add, modify, or delete cardholders using convenient cardholder wizard which prompts user for badge information, area and category assignment, image and signature capture; duplicate cardholder access and assignments with the duplicate cardholder button



CIM - Communication interface provides view of communication between software and field hardware for diagnostic purposes



Controller Downloads - download transactions from and upload instructions to a controller



History Archive - limits the number of transactions stored in the main database to an amount within the capacity of the disk system



Manual Overrides & Automatic Overrides - sets of manual or scheduled, commonly used functions that can lock, unlock, or reset card readers; open, close, or reset relays; or shunt and reset central points



Transaction Filter - used to specify which incoming transactions you wish to see on the transaction monitor

Geoffrey

IR Security & Safety Solutions

2 Cranberry Road

P.O. Box 5907

Parsippany, NJ 07054

Tel: 973.299.1300

Toll Free: 800.604.3633

Fax: 973.299.9799

E-mail: sales@geoffreyaccess.com

Web: www.geoffreyaccess.com



Pin Calculator – uses the encoded ID number from the cardholder badge and converts it to either a standard encrypted number or a Geoffrey encrypted PIN.



Portrait Monitor – display cardholder image when a defined transaction occurs; program to display image at specific monitors



Program Flash – manually download and update controller firmware programs



Report Launcher – create and generate comprehensive database and history reports



Report Launcher Settings - Create, modify and delete new report groups and customize base reports to produce new sub reports



System Manager – define and manage controllers, devices, areas, time zones and holidays



System Manager Settings - Establish default settings for devices, image capture, expiration indicators, area states and door types



System Processor-the application in charge of directing alarms and transactions to their proper destinations; it acknowledges, secures and tracks alarms and logs them to history files



System Security – define and assign privileges to groups, areas, and personnel for data access



Transaction Monitor & View Previous Transactions– view system activity in real-time and transactions that occurred previously



Universal Triggers - Enables a series of actions in response to a trigger event to be sent across any and all Cims, controllers, Readers, Contacts or Relays throughout the system.



User Defined Fields Editor - organize and customize cardholder fields

Software Options:

Geoffrey Video Transaction Retrieval—GVTR - The Geoffrey Video Digital Data System is a state-of-the-art stand-alone digital data storage system. This is an independent system that offers video monitoring and capture to fit the needs of your facility. Whole video files can be saved to be reviewed later or just a selected frame or frames. Requires a Software License per GVDD system.

Geoffrey Guest Pass Control Software—GGUEST - Grants access privileges to the visitors of a site and allows easy management and tracking of those visitors. Provides historical views of previous visitors and visitor badge tracking to locate the visitor badge stock. Speeds up the process of checking in badges for visitors who are leaving the site.

Report Schedule Editor - Automatically generates pre-defined reports on a scheduled basis

Report Schedule Service - Constantly scans the database for report schedules and sends the report to the printer.

Geoffrey CCTV/Universal Interface Software—GCCTV - This software enables the user to activate a device, such as a camera, providing video capture at the point of alarm activation. It will also interface to a wide variety of RS232 devices such as Video Switchers, serial printers and automatic paging devices via an RS232 port on an individual workstation.

Geoffrey

IR Security & Safety Solutions

2 Cranberry Road

P.O. Box 5907

Parsippany, NJ 07054

Tel: 973.299.1300

Toll Free: 800.604.3633

Fax: 973.299.9799

E-mail: sales@geoffreyaccess.com

Web: www.geoffreyaccess.com

Geoffrey CCD Video Camera (Live Video Imaging Kit)-GVCCD-Software Controlled. Includes Video Capture Interface Board and Cables, Camera, Tripod & Studio Quality Lighting.

Geoffrey Signature Pad and Software-GS751B-Adds signature capability to video imaging software. Includes: Signature Software, Signature Pad

Geoffrey Client Expansion-GSFTCX—A maximum of (4) additional client workstations will access GSFT simultaneously. Note: Requires at least one PC on the network to be configured as a File Server

Geoffrey Enterprise Client Expansion - GSFTCEX - Client access license(s) for additional workstations beyond 25 users. Includes appropriate Microsoft SQL licenses.

Software Configurations:

Entry Level—GSFT - Geoffrey Access Control Software Version 5.0 includes: One (1) Client License and database. Can be expanded to five (5) Client Licenses. Note: If expanded it requires at least one PC on the network to be configured as a File Server operating under Microsoft Windows 2000 Server Operating System.

Mid-Level—GSFT10 - Includes license for 10 Geoffrey client workstations and software backup utilities. Note: Must be used if exceed 5 clients. We've incorporated a powerful and comprehensive database manager through the use of Microsoft SQL. This is the most innovative and versatile Security Access Control System. The `drag and drop` programming speeds system administration. Video Badging is a built in standard feature. Various communication options are available including `IP Addressable` for LANs and WANs.

Enterprise Level—GSFTE - The Geoffrey Enterprise Access Control Solution was created with our larger customers needs in mind. Up to 25 clients may be attached to the system. We've incorporated a powerful and comprehensive database manager through the use of Microsoft SQL. This is the most innovative and versatile Security Access Control System. The `drag and drop` programming speeds system administration. Video Badging and Elevator Control are all built in standard features. Various communication options are available including `IP Addressable` for LANs and WANs. Crystal Reports, a powerful report generating software package is also included.



Geoffrey
www.geoffreyaccess.com

Geoffrey

IR Security & Safety
Solutions

2 Cranberry Road
P.O. Box 5907

Parsippany, NJ 07054

Tel: 973.299.1300

Toll Free: 800.604.3633

Fax: 973.299.9799

E-mail: sales@geoffreyaccess.com

Web: www.geoffreyaccess.com

Microsoft
CERTIFIED
Partner

Microsoft
CERTIFIED
Partner